



ECHO

BEAUTY SPA





Where Serenity Echoes Within You



# KALAHARI SKINCARE TREATMENTS

## Hydrating Honeybush Skin Treatment

The Kalahari Honeybush Facial Treatment is a deeply nourishing treatment that consist of natural plant extracts and rich botanical oils. This includes arelaxing facial massage that willhydrate and rejuvenate your skin leaving it feeling ultra-soft and supple. Suitable for all skin types.

45min | R330

## Revitalizing Vita-Gel Skin Treatment

The Kalahari Honeybush Facial Treatment is a deeply nourishing treatment that consist of natural plant extracts and rich botanical oils. This includes arelaxing facial massage that willhydrate and rejuvenate your skin leaving it feeling ultra-soft and supple. Suitable for all skin types.

45min | R480

## Phytic Clay Mask Treatment

This is a pro-active treatment mask that contains Mandelic, Glycolic and Phytic acid derived from Soybean extracts. The mask effectively targets hyperpigmentation, while simultaneously brightening and rejuvenating skin. Suitable for all skin types excluding sensitive skin.

60min | R520

## Phyto Enzyme Compound (PEC) Skin Treatment

The PEC Treatment is a highly effective, deep-cleanse exfoliation treatment. This includes powerful enzymes such as pumpkin, in combination with Glycolic acid. The skinwill appear visibly clearer, brighter and with a smoother texture. Suitable for all skin types excluding sensitive skin.

60min | R570

## Vitamin C Mask Treatment

This is an ultra-firming, anti-ageing treatment, rich in natural Vitamin C and essential antioxidants. Extracted directly from the African Baobab fruit, our Vitamin C boosts collagen and elastin regeneration, making your skin appear visibly brighter and tighter. Suitable for all skin conditions.

60min | R520

## Skin Rejuvenation Treatment (TCA)

Kalahari's TCA Treatment, is a medium strength chemical coagulant that revitalizes the skin by extracting dead surface cells and stimulating cell mitosis. This treatment will effectively refine the appearance of fine lines and wrinkles, reduce enlarged pores and even out skin discoloration.

60min | R430

## Microneedling Roller/Pen CIT

First Microneedling Roller Treatment **R800** (Includes roller device)  
Second Roller CIT Complete Face **R600**

## Lipid Rich Skin Treatment

Lipid rich skin treatment hydrates and repair dry or dehydrated skin. This treatment includes the use of richbotanical ingredients to penetrate and restore the skin's hydrolipid barrier and dermal hydration for all skin types.

45min | R440

## Dermal Detoxifying & Purifying Treatment

The treatment involves a deep cleansing, exfoliation and the use of activated charcoal mask that contains salicylic acid, lactic acid and pumpkin enzyme to restore a healthy glow and improve overall appearance and texture of the skin. Suitable for all skin types excluding sensitive skin.

60min | R520



## MASSAGE TREATMENTS

### Botanical Massage Candle Couples Massage

Experience an intimate, couples massage using Kalahari's rare Botanical Massage Candle. Once this aromatic candle is lit, the warm melted oil is then poured and delicately massaged into the skin. The blend of botanical oils are sure to induce a tender, sensory experience for you and your loved one to cherish for years to come.

60min | R1200 *per couple*

### Khoi-Khoi Escape Back, Neck & Shoulder Massage

Escape to the dunes of the Kalahari Desert with this deeply relaxing back, neck and shoulder massage. The Kalahari Massage Stones deliver a distinct, deep-pressure massage which will leave you feeling relaxed and de-stressed.

30min R400 | 45min R450

### Rollins Sands Full Body Massage

Experience complete serenity with Kalahari's signature full body massage. Botanical oils, in combination with unique massage movements, not only enhance skin tone, but relieve muscle tension.

60min R550 | 90min R650

### African Deep Tissue Massage

This rare, Deep Tissue Massage is a form of massage therapy that focuses on realigning deeper layers of muscles. This treatment is sure to invoke an authentic African experience, while simultaneously relieving everyday stiffness and muscle tension.

60min | R650

### Tula-Tula Pregnancy Massage

Nurture your body with our tranquil Tula-Tula Pregnancy Massage. Using a combination of gentle massage movements and aromatic botanical oils that are completely safe to use during pregnancy, this treatment will leave you feeling completely relaxed, rejuvenated and revitalized.

60min R600 - 90min R700

### Calabash Foot Massage

Sink into deep relaxation with Kalahari's signature foot treatment. Designed to instantly soothe tired, aching feet using sunbaked Kalahari Calabashes and indulgent aromatic fragrances.

45min | R300

### African Head Massage

Our nourishing African Head Massage will not only leave you feeling utterly relaxed and de-stressed, but also deeply hydrates and moisturizes the scalp using nutrient-rich botanical oils

30min | R300





Find Your Inner Harmony



## ECHO TREATMENTS

### NAILS

#### Gel on Natural Nails (Hand or Feet)

- Rubber Base **R280**
- Builder gel & poly gel **R300**

#### Acrylic Tips with Overlay **R350**

- Starting from

#### Ombre Nails **R400**

- 2 colours faded over each other

#### Quicky **R200**

- File, buff & shine

#### Soak Off **R130**

- With quicky & paint, no gel application

#### Echo Signature Manicure **R350**

- File, shape, buff, exfoliate, cuticle treatment, massage, colour overlay

#### Echo Signature Pedicure **R370**

- File, shape, buff, exfoliate, cuticle treatment, massage, colour overlay

#### Echo Signature Mani & Pedi **R650**

- File, shape, buff, exfoliate, cuticle treatment, massage, colour overlay & paraffin dip treatment

### WAXING & TINTING

Eyebrow or Lip **R100**

Face **R200**

Under-arm **R120**

Half Leg **R220**

Full Leg **R280**

Bikini **R200**

Brazilian **R250**

Hollywood **R300**

### LASHES

Classic **R550**

Hybrid **R699**

Volume **R850**

### ADD ON TREATMENTS

Vitamin C Eye Zone **R200**

Hyaluron Eye Zone **R200**

Hyaluron Alginate Mask **R190**

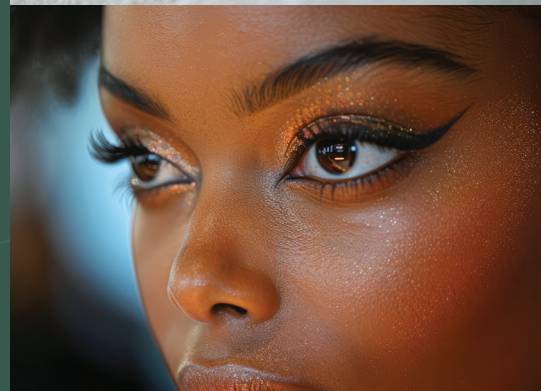
Collagen Eye Patches **R120**

Paraffin Nail Treatment **R100**

Vital Gel Neck & Decollete Treatment **R580**

De Ageing Neck & Decollete **R580**

Desert Glow Full Body Exfoliation **R350**



# ECHO SPA PACKAGES

## MOM TO BE SPA PACKAGE

- Tula-Tula Pregnancy Massage fo the mom-to-be (60min)
- Kalahari Facial Treatment (30min) or
- Express Mani or Pedi with gel application (30min) Includes welcome drinks, breakfast or light lunch and (30min Complimentary Jacuzzi)

**90 Min Total | R800 p/p**

## MID-WEEK SPA PACKAGE

- Kalahari Desert Glow Full Body Exfoliation (30min)
- Rolling Sands Full Body Massage (60min) Includes welcome drink and (30min Complimentary Jacuzzi)

**90 Min Total | R850 p/p | R1600 couple**

## LET'S RELAX SPA PACKAGE

- Kalahari Honeybush Facial Treatment (30min)
- Rolling Sands Full Body Massage with Breathing Exercises (60min)
- Calabash Foot Treatment (30min) Includes welcome drink and (30min Complimentary Jacuzzi)

**90 Min Total | R1000 p/p | R1900 couple**

## SHEER BLISS SPA PACKAGE

- Rolling Sands Full Body Massage (45min)
- African Head Massage (15min)
- Calabash Foot Treatment (30min) Includes welcome drink and (30min Complimentary Jacuzzi)

**90 Min Total | R650 p/p**

## PAMPER ME SPA PACKAGE

- Rolling Sands Full Body Massage (60min)
- Kalahari Facial Treatment (30min) or Echo's Signature Express Pedicure (30min)
- Echo's Siganture Express Manicure (30min) Includes welcome drink, breakfast or light lunch and (30min Complimentary Jacuzzi)

**90 Min Total | 750 p/p**

## ECHO SIGNATURE SPA PACKAGE

- Rolling Sands Full Body Massage with Hot Stones (60min)
- Hand and Foot Buff Treatment (30min)
- African Head Massage (30min) Includes welcome drink, breakfast or light lunch and (30min Complimentary Jacuzzi)

**120 Min Total | R950 p/p | R1800 couple**

## FULL DAY OF SPOILING PACKAGE

- Rolling Sands Full Body Massage with breathing excercises and Calabash Foot Treatment (60min)
- Desert Glow Exfoliation treatment (45min)
- Kalahari Honeybush Facial with African Head Massage (45min)
- Echo Signature Pedicure with Complimentary Gel (60min) and (30min Complimentary Jacuzzi) Includes breakfast and a light lunch

**240 Min Total | R1699 p/p**

## DELUXE PAMPER ME PACKAGE

- Rolling Sands Full Body Massage (60min)
- Kalahari Full Facial (30min) or
- Full Pedicure with paraffin dip (60min) or
- Full Manicure with paraffin dip (60min) Includes a welcome drink, breakfast or a light lunch, complimentary jacuzzi session (30min)

**120 Min Total | R1000 p/p**

## JUST FOR YOU PACKAGE

- Khoi-Khoi Escape Back, Neck & Shoulder Massage (30min)
- Express Facial (30min)
- Complimentary Jacuzzi (30min)
- Welcome drink

**60 Min Total | R600 p/p**

## ECHO SPA PACKAGES

### TOTAL BLISS PACKAGE (HALF DAY)

- Rolling Sands Full Body Massage with hot stones at the back (60min)
- Full Pedicure with complimentary gel and paraffin dip (45min)
- Full Manicure with complimentary gel and paraffin dip (45min)
- Lipid Rich Skin Treatment (30min)
- Complimentary Drink and Breakfast/Lunch
- Complimentary Jacuzzi session (30min)

180min | R1499 p/p

### FULL DAY OF SPOILING SPA PACKAGE

- Rolling Sands Full Body Massage with hot stones at the back (60min)
- Full body desert glow exfoliation (30min)
- African head massage (30min)
- Foot calabash massage (30min)
- Vitamin C Skin Treatment (60min)
- Full Pedicure with complimentary gel (60min)
- Complimentary Jacuzzi session (30min)
- Welcome drinks, Lunch and Breakfast

270min | R1750 p/p





Kiddies packages 



### FULL PAMPER PACKAGE

*(Minimum of 5 pax)*

- Kids bubbly
- Full body massage (45 min)
- Pedi with paint (30 min)
- Table setup
- Platter to share / Pizza to share

**R600**

### TEEN SPA PACKAGE

*(Minimum of 5 pax)*

- Kids bubbly
- Mini facial (15 min)
- Back, Neck & Shoulder (30 min)
- Pedi with paint (15 min)
- Table setup
- Platter to share / pizza to share

**R550**

### KIDDIES FULL BODY MASSAGE

- Welcome drink
- Full body massage (30 mins)

**R350**

